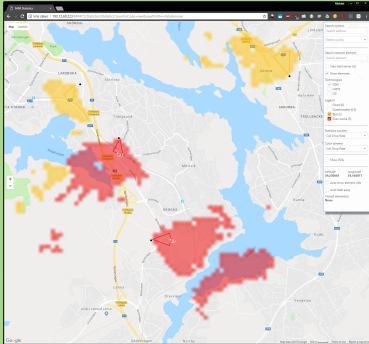


MIM – Network Visualizing System

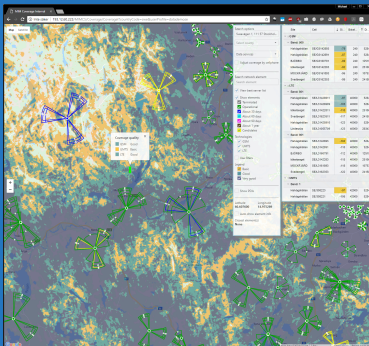
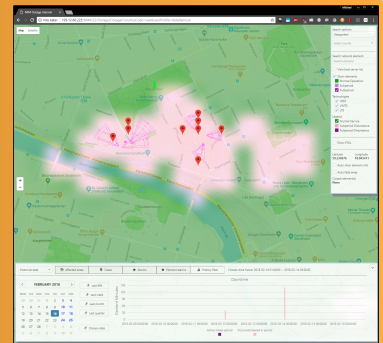


Statistics

Visualize network element statistical counters on map with served areas

Outage History

Verify customer complaints and find cause for statistical anomalies

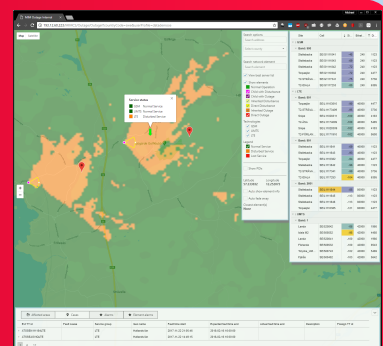


Coverage

Show current network coverage and throughput

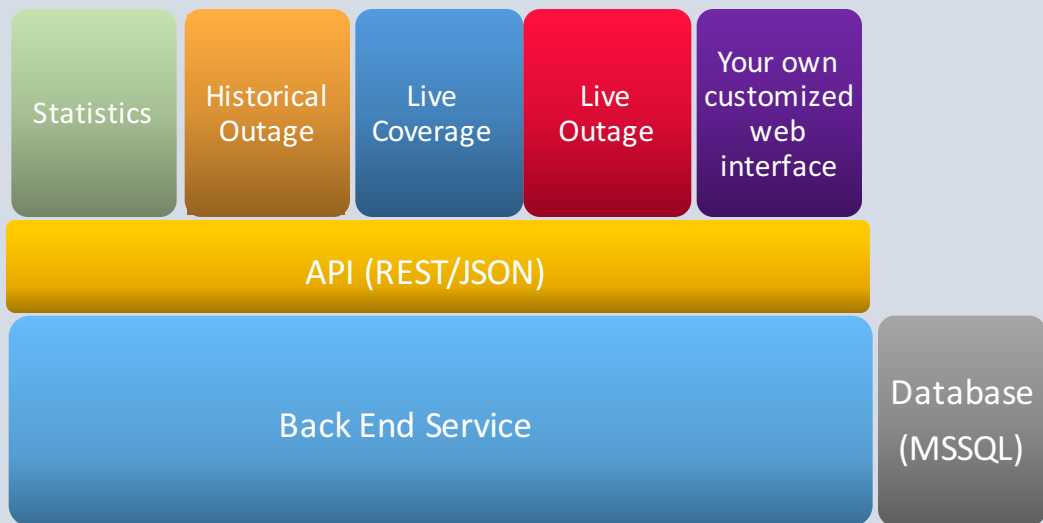
Live Outage

Show current network outages with affected areas in near real time



MIM – Network Visualizing System

System Overview



Front End (Web page)

- View locations of active sites and sectors for all technologies and bands
- View planned sites and sectors (also terminated ones)
- View RBS and Cell related information
- List the six best cells for each technology and band for a point on the map
- Create and edit points of interest
- Search functionality, locate network elements and coordinates
- Show network element statistical counters
- Find and show historical outages
- Show live outages
- Show current coverage
- Option to build and configure your own web interface

API (REST/JSON)

- Provides the possibility to create your own interface for data presentation, e.g. public web page for coverage presentation to customers.

Back End Service

- Interfaces to radio planning system, e.g. Atoll
- Interfaces to trouble ticket system, e.g. ITSM
- Interfaces to alarms gathering system, e.g. Netrac
- Automatically calculates coverage on a daily basis (or any other period desired)
- Automatically calculates disturbances/outages in near real time
- Saves tickets and alarms for historical analysis
- Imports network element statistics for presentation/troubleshooting

